

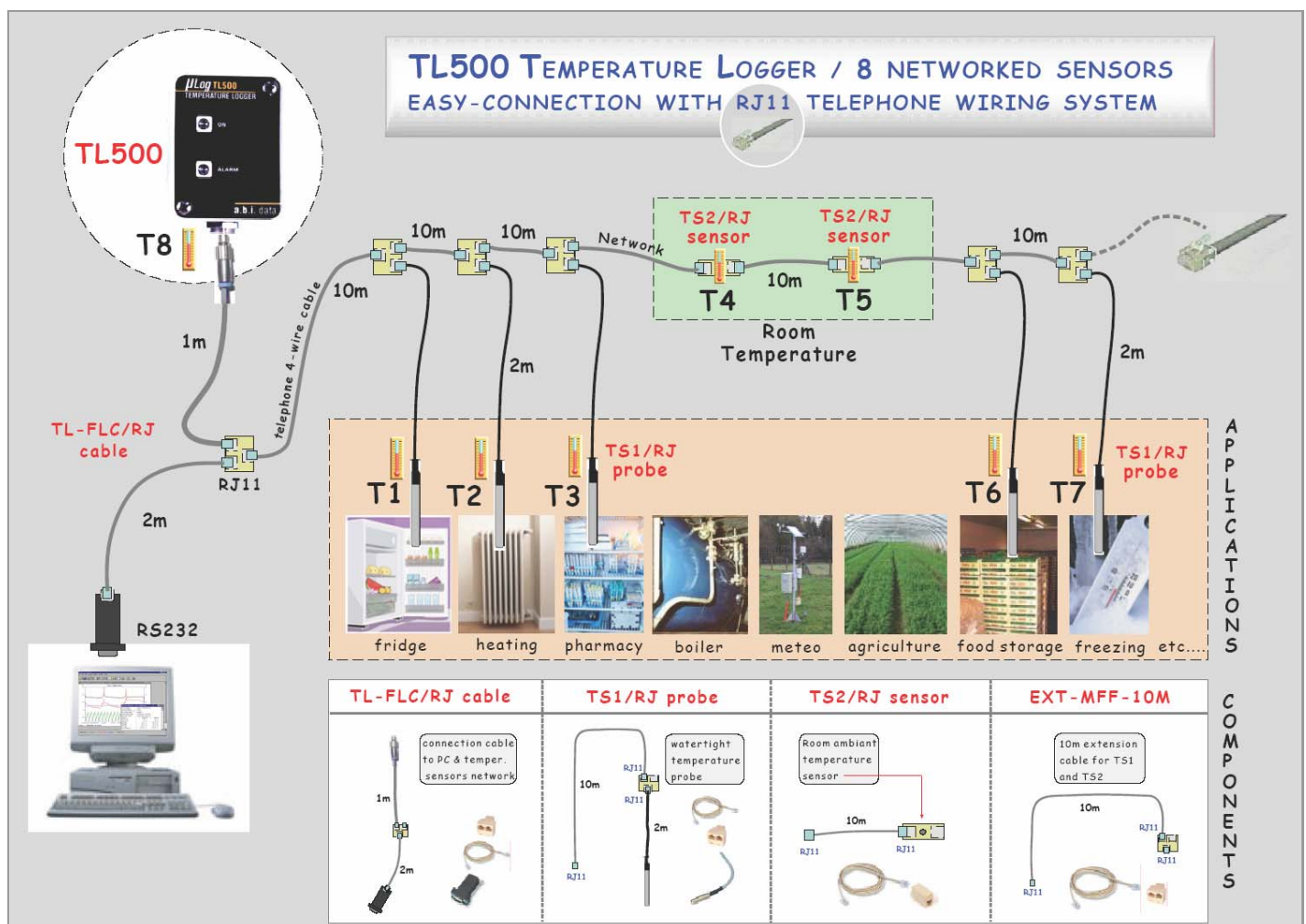
## Temperature recorder - 8 channels

**NEW** : easy RJ11 connection/cabling of temperature sensors network.

- Fast and easy connection of sensors with RJ11 connectors and telephone cable, sensors supplied with cables – sensors network wired in a few minutes.
- Up to 8 digital sensors wired in a network, up to 150m long.
- High 16-bit resolution - range selectable per channel from -50 to +125°C.
- Min - Max alarm settings per channel.
- Short time logging or permanent installation.
- Long battery life (typically 2 year).
- Miniature yet powerful.
- Real time measurements output.
- Can also be operated as a stand alone single channel temperature logger.



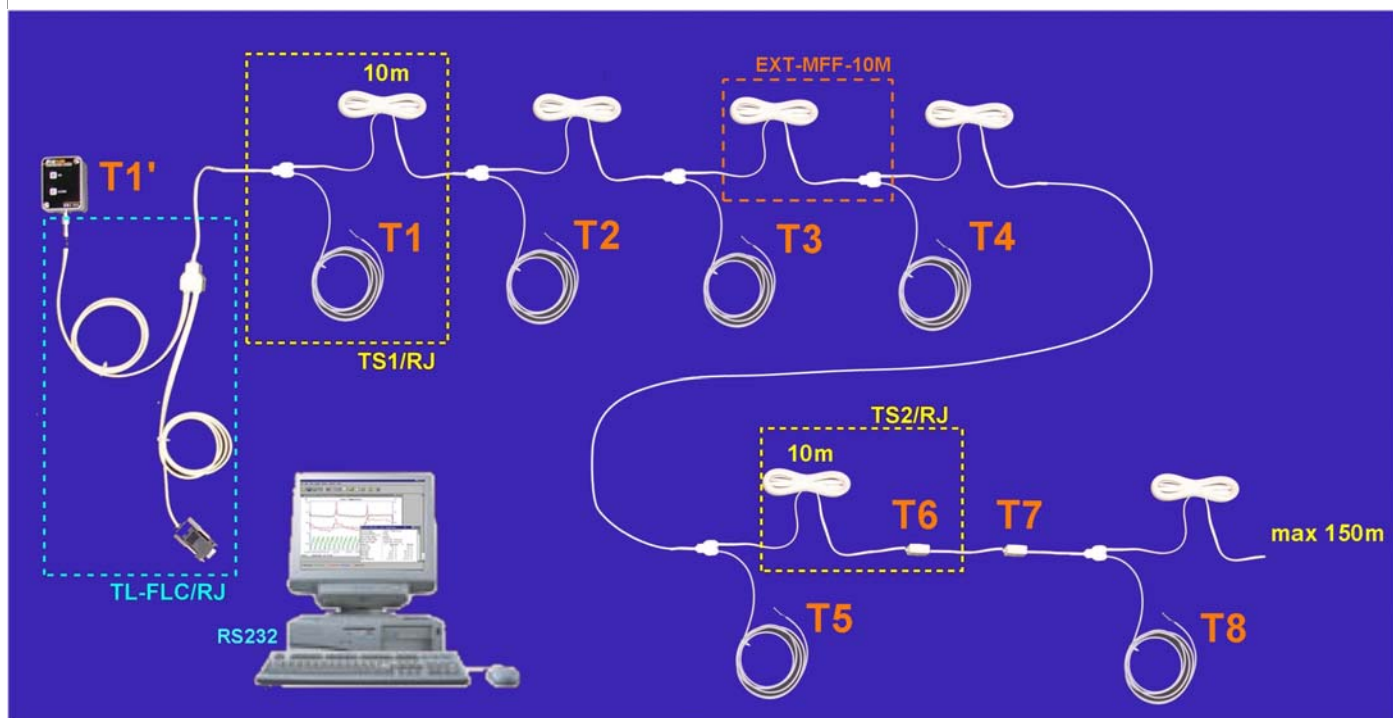
TL500 is easy to install and to run. Just connect the temperature sensors with the cable and connectors supplied. No tool is needed. Temperature sensors are interconnected with a RJ11 compatible cabling (similar to telephone cable) and are automatically recognized by the logger. No converters are needed. Configuration of the TL500 is quite easy and similar to setup of a single channel temperature logger.



# Applications

- *Energy management / building temperature survey / air conditioning.*
- *Fridge temperature monitoring.*
- *Frozen and chilled food temperature follow-up in shops and stores and trucks.*
- *Temperature survey in compartmented storage.*
- *Environmental monitoring, agriculture, horticulture.*
- *Concrete and building material temperature measurement.*
- *Multipoint temperature follow-up in reactors, processing tunnels, soil, conditioned rooms.*
- *Green houses, busses, train compartments, etc...*

## TL500 Temperature Sensors Network



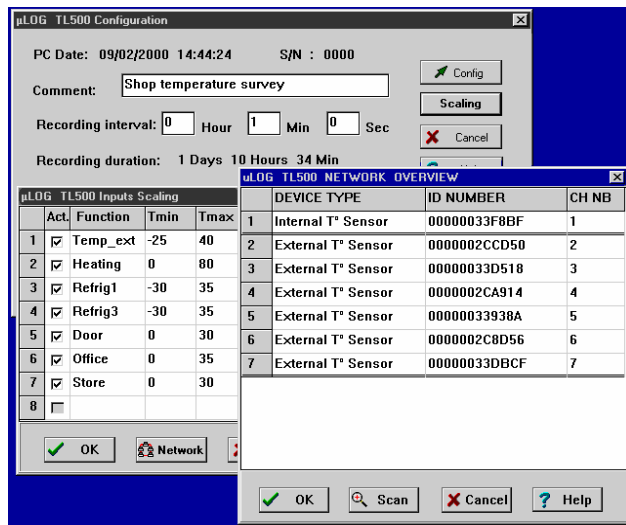
## TL500 recorders and accessories

<b>TL500</b>	8 channels temperature recorder, one built-in temperature sensor, 15.000 measurements memory.		<b>EXT-MFF-10M</b>	Extension cable 10m, 1 male RJ11M to 2 female RJ11F socket, for temperature sensors network extension.
<b>- EXT</b>	Memory extension to 60.000 measurements.		<b>EXT-MF-5M</b>	Extension cable min. 20m (length on request), 1 male RJ11M to 2 female RJ11F sockets, for network extension.
<b>TL-FLC/RJ</b>	flying cable for RS232 connection and temperature network connection (5m).		<b>EXT-MFF-xM</b>	Extension cable min. 20m (length on request), 1 male RJ11M to 2 female RJ11F sockets, for network extension
<b>TS1/RJ</b>	watertight temperature probe, 55°/+100°C, cable 2m + 10m network cable + 2 female RJ11 sockets.		<b>RDFIX</b>	DIN rail fixation adapter
<b>TS2/RJ</b>	Ambient room temperature sensor, RJ11F to RJ11F connection, supplied with 10m network cable		<b>μLOGTL</b>	TL500 Windows software.

# µLOGTL Software

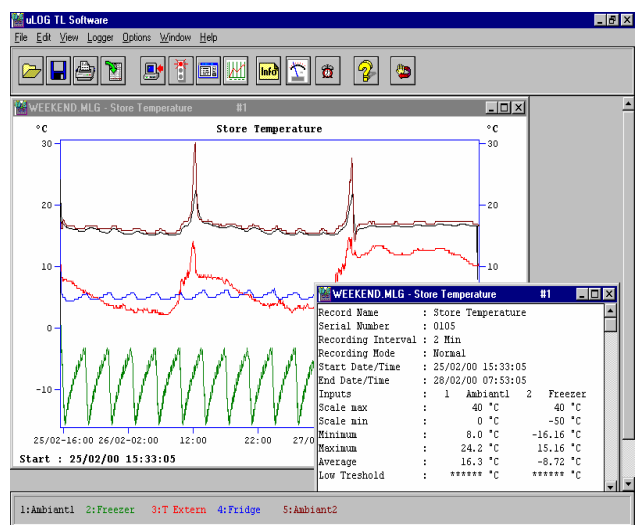
## Configuration :

Automatic search of sensors on the network. Setting parameters for sensors identification, recording interval, temperature ranges, alarm levels,...



## Processing :

Download and saving of recordings, graphic display, statistical calculations, export of recordings to Excel, online measurements, alarm acknowledgment.



## Technical specifications

- **Temperature sensors** : maximum 8; 1 internal and 1 to 8 external; sensors connected in network.
- **Sensors type** : digital; "1-wire bus" communication protocol, no accuracy loss or drift due to long cabling.
- **Sensors connection** : telephone 4 wire cable, max. total cabling extension : 150m. RJ11 connectors.
- **Sensors range** : -55....125°C (-40....70°C int.sensor).
- **Accuracy** :  $\pm 0.5^{\circ}\text{C}$  (-15...85°C);  $\pm 1^{\circ}\text{C}$  (-30....-15°C & 85....110°C).
- **Resolution** : up to  $0.01^{\circ}\text{C}$ , depending on range.
- **Power supply** : (disposable) lithium battery, up to 2 years life. Power drain from the RS232 port during communication with the PC.
- **Memory capacity** : 15,000 or 60,000 readings.
- **Recording interval** : 1 second to 12 hours.
- **Alarms** : min - max settings per channel, latched or not, LED or PC signaling.
- **Start of recording** : on programmed date and time or immediate start after setup.
- **Stop** on memory full or overwrite oldest records.
- Possible to download temperature measurements while still recording.
- **Dimensions** : 70 x 50 x 35mm.
- **Weight** : 100 g (inclusive battery).
- **Enclosure** : polycarbonate, IP65 protection.
- **Software** : under Windows (95, 98, NT, XP), configuration, download, export to Excel, etc....

## Scope of Network components

TS1/RJ and TS2/RJ temperature sensors :



RJ11 cable and network node adapter :

