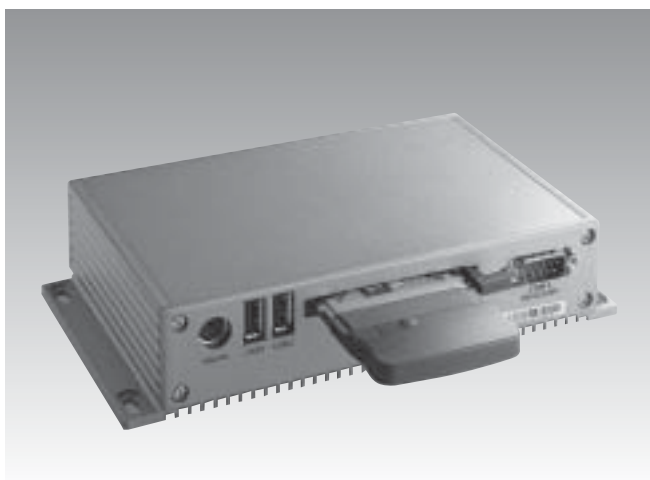


# UNO-2059

GX1-300 UNO with PC Card, LAN, 2xUSB,  
2xRS-232/485, 2xRS-232/422/485



CE FCC

## Features

- On-board GX1-300 MHz, 64/128 MB SDRAM
- Two RS-232/485 and two RS-232/422/485 ports with automatic flow control.
- One 10/100Base-T RJ-45 port.
- Two USB ports and one type I/II PC Card.
- One programmable diagnostic LED and buzzer.
- Microsoft® Windows® CE .NET ready solution.
- Windows® 2000 driver ready and Linux driver support
- Windows® CE .NET 4.2 Binary BSP provided

## Introduction

Advantech's UNO-2059 is a 586-grade platform that offers USB and PC card interfaces to fulfill user's I/O device expansion needs. In addition, it also offers two RS-232/485 and two RS-232/422/485 communication ports on board with automatic flow control functionality. The UNO-2059 is an ideal and compact solution for large computing and communication requirements.

UNO-2059 comes with a Windows CE OS offering a pre-configured image with optimized onboard device drivers. Microsoft Windows CE is a compact, highly efficient, real-time operating system designed for embedded systems without mechanical HDD limitations.

To expand storage capability, the UNO-2059 allows the addition of an external 2.5" HDD using Advantech's UNO HDD extension kit. It can be used for large data backup requirements and popular OS installations such as Microsoft Windows and Linux OS. Significant anti-vibration (1G w/ HDD) is maintained even with the mechanical HDD inside.

UNO-2059 is a perfect embedded application ready platform that can shorten your development time and offer a rich networking interface to fulfill your diverse requirements.

## Specifications

### General

- **Dimensions** 188.8 x 106.5 x 35.5 mm (7.5" x 4.2" x 1.4")
- **Power Consumption** 15 W (typical)
- **Power Input** Min. 24 W (9~36 V<sub>DC</sub>) (e.g. +24 V @ 1 A)
- **Power Supply** 9 ~ 36 V<sub>DC</sub>
- **Weight** 0.8 kg
- **OS Support** Windows® 2000, Windows® CE .NET 5.0, Linux

### System Hardware

- **CPU** NS Geode™ GX1-300 MHz
- **Indicators** Power LED, IDE LED, one programmable diagnostic LED and buzzer
- **Keyboard/Mouse** 1 x PS/2
- **Memory** 64/128 MB SDRAM on board
- **Storage** SSD: 1 x internal type I/II CompactFlash® slot  
HDD: extension kit for one standard 2.5" HDD  
DB15 connector
- **VGA**

### Communications

- **Serial Ports** 2 x standard RS-232, 2 x RS-232/RS-422/485  
- Automatic RS-485 data flow control  
- RS-422/485 surge protection up to 2,000 V<sub>DC</sub>
- **Serial Port Speed** RS-232: 50 ~ 230.4 kbps;  
RS-422/485: 50 ~ 921.6 kbps (Max.)
- **USB Ports** 2 x USB ports, OpenHCI, Rev. 1.1 compliant
- **LAN** 1 x 10/100Base-T RJ-45 port
- **PC Card** 1 x PC Card slot  
Supports CardBus (Card-32) Card and 16-bit (PCMCIA 2.1/JEIDA4.2) Card  
Support +5 V, +3.3 V and +12 V @ 120 mA power
- **Watchdog Timer** Programmable

### Environment

- **Humidity** 95 % @ 40° C (non-condensing)
- **Ingress Protection** IP40
- **Operating Temperature** -10 ~ 55° C (14 ~ 131° F)
- **Shock Protection** IEC 68 2-27  
CompactFlash®: 20 G @ DIN, half sine, 11 ms,  
50 G @ Wall/Panel, half sine, 11 ms
- **Vibration Protection** IEC 68 2-6  
CompactFlash®: 2 Grms @ sine, 5 ~ 500 Hz,  
1 Oct./min, 1hr/axis.  
HDD: 1 Grms @ sine, 12 ~ 300 Hz, 1 Oct./min,  
1 hr/axis.

## Ordering Information

### Hardware

- **UNO-2059-GDA1** GX1-300, 64 MB SDRAM, PC Card, 4xCOM, 2xUSB
- **UNO-2059-HDA1** GX1-300, 128 MB SDRAM, PC Card, 4xCOM, 2xUSB
- **UNO-HD20-A** UNO-2000 HDD extension kit

### Hardware with OS

- **UNO-2059CE-GDA2** UNO-2059-GDA1 with 32 MB CF and CE .NET 4.2