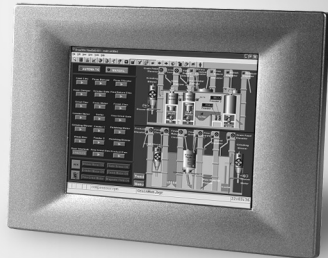


# TPC-31T

## 3.5"QVGA TFT LCD TI AM3517 Touch Panel Computer

NEW



### Features

- TI AM3517 processor on board
- 3.5" color TFT LCD
- Super slim and compact design with plastic housing
- Fanless cooling system
- NEMA4/IP65 compliant front panel
- Built-in flash memory and Windows® CE OS
- 1 x SD card slot
- Automatic data flow control RS-485

### Introduction

The TPC-31T has a super slim compact design and uses a low voltage processor and heat sink to achieve a unique fanless design. With its NEMA4/P65 front panel it is resilient enough to resist the harsh conditions of any industrial environment. The TPC-31T has a TI AM3517 low voltage processor. With a 320 x 240 resolution and high graph display, it renders image on display clearly. Furthermore, the TPC-31T provides multiple standard communication ports allowing connectivity with a variety of peripherals. The TPC-31T also supports Windows CE OS let it become an Open HMI solution for system integration.

### Specifications

#### General

- **Certifications** BSMI, CCC, CE, FCC, UL
- **Cooling System** Fanless design
- **Dimensions (W x H x D)** 120.79 x 85.5 x 26.5 mm (4.76" x 3.37" x 1.04")
- **Enclosure** ABS
- **Mounting** Panel
- **OS Support** Windows CE 6.0 (English Version)
- **Power Consumption** 8 W (typical)
- **Power Input** 18 ~ 32 V<sub>DC</sub>
- **Watchdog Timer** Programmable as 250 ms, 500 ms, 1 second
- **Weight (Net)** 0.25 kg (0.55 lbs)

#### System Hardware

- **CPU** TI AM3517 600MHz
- **Memory** DDR2 256MB on board
- **LAN** 10/100Base-T x 1
- **Storage** 4G on board SD card  
1 x SD Card slot  
128K FRAM for Data back-up
- **I/O** RS-232/RS-485 X1 with auto data flow control  
USB 2.0 x 1

#### LCD Display

- **Display Type** QVGA TFT LCD
- **Display Size** 3.5"
- **Max. Resolution** 320 x 240
- **Max. Colors** 64 K
- **Luminance cd/m<sup>2</sup>** 200
- **Viewing Angle (H/V)** 120/110
- **Backlight Life** 30,000 hrs
- **Contrast Ratio** 300 : 1

#### Touchscreen

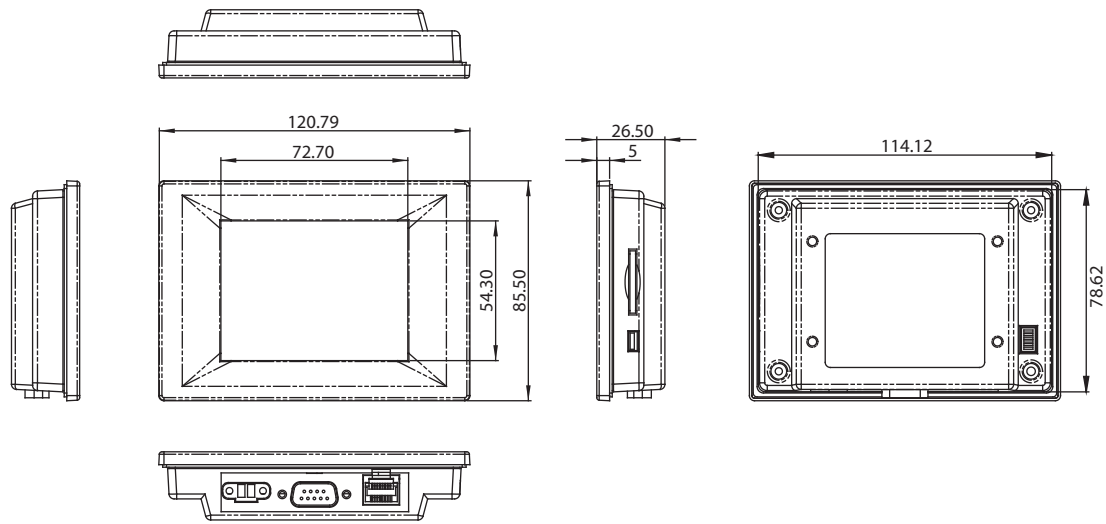
- **Lifespan** 1 millions times with a silicone rubber of 8 mm diameter finger
- **Light** Transmission Above 80%
- **Resolution** Linearity
- **Type** 4-wire, analog resistive

#### Environment

- **Humidity** 10 ~ 95% RH @ 40°C, non-condensing
- **Ingress Protection** Front panel: NEMA4, IP65

## Dimensions

Unit: mm



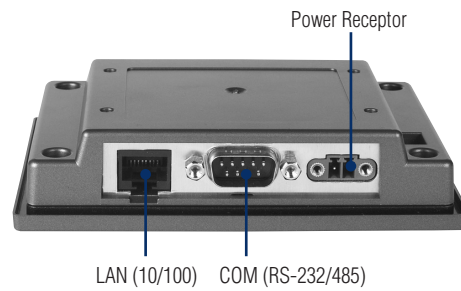
Panel Cut-out Dimensions: 115 x 79.5 mm

- **Operating Temperature** 0 ~ 50°C (32 ~ 122°F)
- **Storage Temperature** -20 ~ 60°C (-4 ~ 140°F)
- **Vibration Protection** 1 Grms (5 ~ 500 Hz)  
(Operating, random vibration)

## Ordering Information

- **TPC-31T-E3AE** 3.5" QVGA TPC, TI AM3517 600MHz, 256 MB
- **PWR-247-AE** 24 V 50 W AC-DC Power Adapter

## Rear View



## Side View

