

# SquirrelView & SquirrelView Plus SOFTWARE

**Grant**  
DATA LOGGING

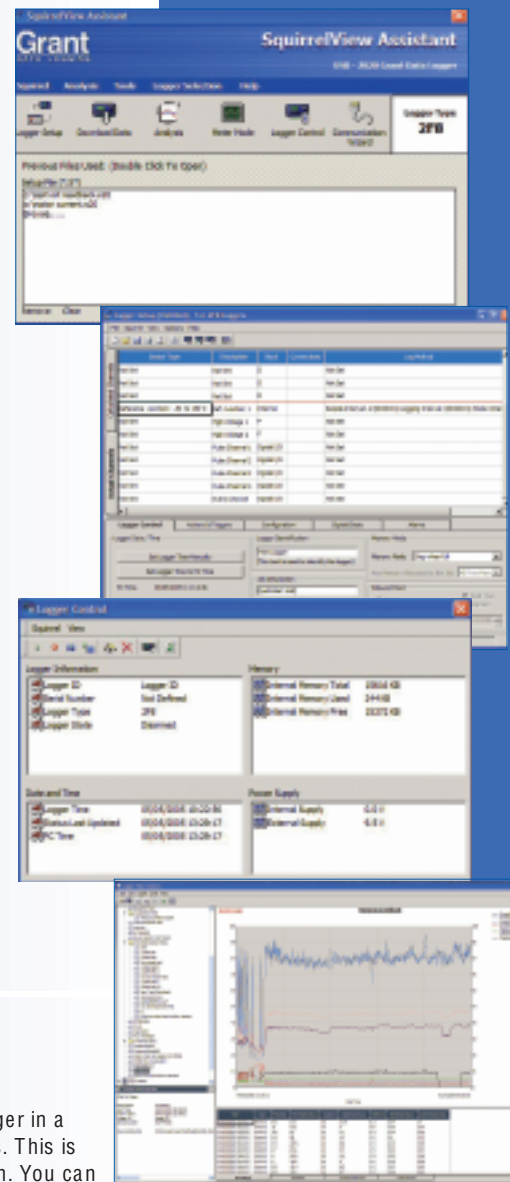
*SquirrelView is a universal software package that works with any Grant Squirrel data logger and is included **FREE** with every new logger. It enables easy setup of the logger, speedy download of data, and direct export to Excel spreadsheets. SquirrelView Plus gives you the additional benefits of graphically analysing your historical and on-line data, along with advanced reporting.*

*A **FREE** 30 day trial of SquirrelView Plus is included with SquirrelView.*

Free  
Trial of  
SquirrelView  
Plus

## Key Features

- Intuitive, user friendly spreadsheet style setup allows quick logger configuration in any application
- Flexible data presentation allows you to quickly display and analyse real time or historical data as a line graph, bar chart or analog gauge
- Graphical alarm and event identification lets you easily identify occurrences around specific analog or digital events e.g. pump coming on
- Quick Graph function lets you quickly and easily view large data files
- Export data into Excel or as a CSV file for customisable data analysis
- Send data straight from your logger into Excel in real time
- Easily view and control the logger status from one single screen
- Downloading data by date, time or events, saves you time when working via modem or looking for specific data (Squirrel 20xx only)
- All settings can be saved for efficient reuse
- Security function protects your data and setup configurations
- Communication wizard makes working with modems, Ethernet, GSM and wireless systems straight forward
- Downloader for automating tasks using MS scheduler (Squirrel 20xx only)



## SquirrelView Plus Analysis

SquirrelView Plus lets you quickly and easily analyse the data from your Squirrel data logger in a familiar Explorer style interface. Data can be displayed with 2 different auto scaling Y-axes. This is particularly useful when displaying widely varying data from different sensors on one graph. You can also zoom in on areas of interest, use a cursor to pick out exact values, times and dates, get a statistical summary of your data, set high and low alarm thresholds and, using the calculation function, you can create new virtual channels from existing channels.

SquirrelView Plus also incorporates a report generation facility, which allows you to create custom report templates consisting of a title page with descriptive text, headers and footers, graphs, tabular list of data, statistics and data logger setup information. Templates can be setup with any of these combinations and saves time when preparing similar presentations of data.

[www.grant.co.uk](http://www.grant.co.uk)

# SquirrelView & SquirrelView Plus SOFTWARE



## System Specification

### SETUP

- Setup can be verified before it is sent to the logger
- Converts setup files from previous Setwise software to SquirrelView
- Hide facility allows you to tailor setup interface to your own requirements
- Print setup information

### METER MODE

- Displays up to 16 channels in real time
- 3 Plot types: line graphs, gauges & dials
- Autoscaling of Y axis
- Value readout at cursor position
- Saves metered data for re-use in other software packages
- Graph printout facility
- Graph can be presented in various styles

### DOWNLOAD

- Download directly as a CSV file
- [Download straight to a graph](#)
- Download by date & time (SQ20xx only)

### EXPORT

- Easy to use export wizard
- Customisable data export for Excel, Lotus or other applications
- Export viewer allows quickview facility of data

### ADDITIONAL FEATURES

- Tips of the day - provides informative shortcuts
- Logger diagnostics
- Security feature enables password setup
- Communication wizard enables easy setup of USB (20xx only), RS232, Ethernet and Modem
- Interactive Help
- Spanish and German versions available

### ANALYSIS

- Easy analysis for: SQ20xx, SQ400/800, SQ1000, SQ1600, SQ1200/1250 and 600 series loggers
- Easy to use Explorer style interface
- Fully configurable data views
- Creation of templates
- Flexibility for customisable reports
- Facility to include text comments with graphs
- Flexible zoom feature including X and Y axis
- Statistics calculator
- Autoscaling of Y axis
- Value readout at cursor position
- Set and view high and low level thresholds
- Customisable report facility: prints out graphs, readings, etc
- Tolerance curve
- Calculated channels
- User notes
- Archives
- File convertor from Setwise and Squirrelwise
- Product cure calculation
- Display oven profiles and oven zones
- Append/add datafiles
- Import CSV file

### Minimum computer requirements:

- Windows 98SE, 2000, XP
- Pentium II 266 MHz
- RAM as specified by PC operating system
- 60 Mb hard disk space and 1 CD drive
- Colour SVGA monitor running at 800 x 600 (1024 x 768 recommended)
- 1 RS232 or USB port (where applicable)
- Mouse

SquirrelView Plus version only

SquirrelView & SquirrelView Plus

**Please note: 1200/1250 loggers require SquirrelView Plus to operate. Due to the limitations of these loggers, Setup, Status and Meter Mode features are not supported.**

Due to our policy of continuous improvements, specifications may change without prior notice. Grant believe that all information declared is correct at the time of issue. No liability is accepted for errors and omissions.



Grant Instruments (Cambridge) Ltd  
Shepreth, Cambridgeshire SG8 6GB  
England

Tel: +44 (0) 1763 260 811  
Fax: +44 (0) 1763 262 410  
Email: [acquisitionsales@grant.co.uk](mailto:acquisitionsales@grant.co.uk)

**Quality Statement:** Grant Instruments operates a Quality Management System complying with ISO9001:2000. It is Grant's policy to supply customers with products which are fit for their intended purpose, safe in use, perform reliably to published specification and are backed by a fast and efficient customer support service.

**Manufactured and designed in Cambridge, England.**



**Dr. Schetter BMC GmbH**  
Boschstrasse 12  
82178 Puchheim

**TEL 089 800 694-0**  
FAX 089 800 694-29  
[www.bmc.de](http://www.bmc.de)

