

PWR-242

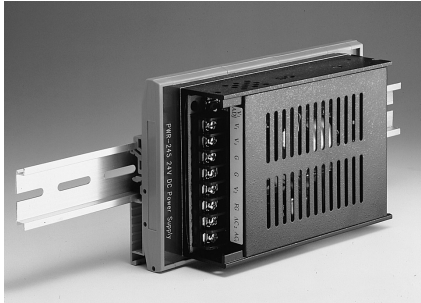
PWR-243

PWR-244

Switching Power Supply for DIN-rail Mounting

Switching Power Supply for Panel Mounting

Switching Power Supply for Panel Mounting



PWR-242



Input

- **Input Voltage** 90 ~ 264 V_{AC} wide input range
- **Input Frequency** 47 ~ 63 Hz
- **Input Current** 1.2 A max.
- **Short Protection**

Output

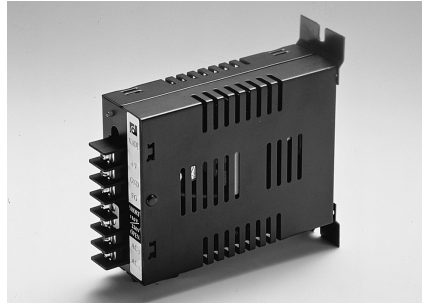
- **Output Voltage** +24 V_{DC} ±10%
- **Output Current** 2.1 A max.
- **Overload Protection**

General

- **Dimensions (LxWxH)** 181 x 113 x 60 mm (7.01" x 4.43" x 2.35")
- **Operating Temperature** 0 ~ 50° C (32 ~ 122° F)

Ordering Information

- **PWR-242** Switching Power Supply for DIN-rail Mounting



PWR-243



Input

- **Input Voltage** 85 ~ 132 V_{AC} or 170 ~ 264 V_{AC} switchable
- **Input Frequency** 47 ~ 63 Hz
- **Input Current** 1.4 A max.
- **Short Protection**

Output

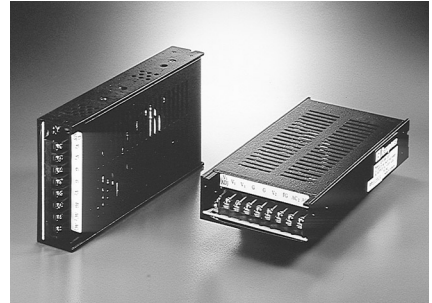
- **Output Voltage** +24 V_{DC} ±10%
- **Output Current** 3 A max.
- **Overload Protection**

General

- **Dimensions (LxWxH)** 128 x 97 x 40 mm (5" x 3.8" x 1.6")
- **Operating Temperature:** 0 ~ 50° C (32 ~ 122° F)

Ordering Information

- **PWR-243** Switching Power Supply for Panel Mounting



PWR-244



Input

- **Input Voltage** 100~240 V_{AC}
- **Input Frequency** 47 ~ 63 Hz
- **Inrush Current (cold)** 25 A/110 V_{AC} 50 A/220 V_{AC}
- **Short Protection**

Output

- **Output Voltage** +24 V_{DC} ±10%
- **Output Current** 4.2 A max.
- **Overload Protection**

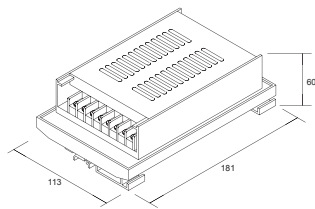
General

- **Dimensions (LxWxH)** 198 x 99 x 35 mm (7.80" x 3.90" x 1.38")
- **Operating Temperature** 0 ~ 50° C (32 ~ 122° F)

Ordering Information

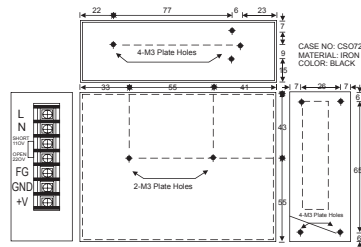
- **PWR-244** Switching Power Supply for Panel Mounting

Dimensions



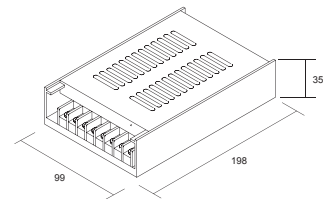
Unit: mm

Dimensions



Unit: mm

Dimensions



Unit: mm