

PCM-3620

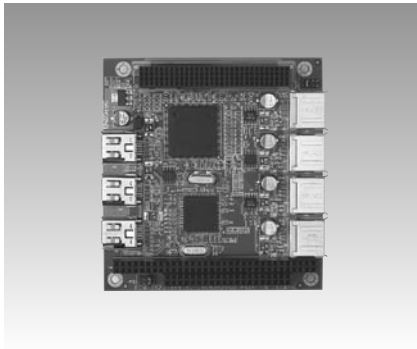
PCM-3835

PCM-3836

USB 2.0 and IEEE 1394a PC/104+ module

IDE Flash Disk Module/CompactFlash™ Card

IDE Flash Disk Module/CompactFlash™ Card



PCM-3620

Features

- 4 USB 2.0 Compliant Port, up to 480 Mbps transactions
- USB EHCI 1.0 and PHCI 1.0a compatible
- 3 IEEE1394a Compliant Port, up to 400 Mbps
- IEEE 1394a OHCI 1.1 Compliant

Specifications

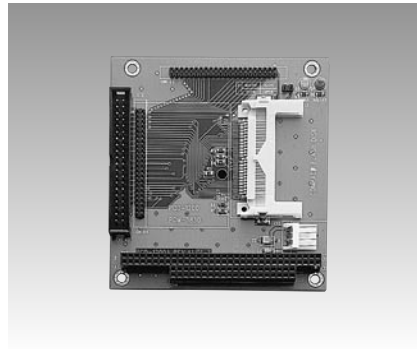
- **Chipset** NEC uPD720101 and TI TSB43AB23
- **USB** 4 USB 2.0 Compliant Ports
Compliant with OHCI USB Rev 1.0a
Compliant with EHCI for USB Rev 1.0
High-speed (480Mbps), full-speed (12Mbps) and low-speed (1.5Mbps) transactions
- **IEEE 1394a** 3 port compliant with 1394 Open Host Controller Interface Specification (Release 1.1)
- **Power Requirement** +5 V , +12 V
- **Temperature** 0 ~ 60° C (32~140° F), operation, -20~80° C, operation (optional)
- **Operating Humidity** 0% ~ 90% relative humidity, non-condensing
- **Size/Weight** 96 x 90 mm/0.81 kg (0.18b)

Packing List

- Startup manual
- PCM-3620 board

Ordering Information

- **PCM-3620-00A1** 4 USB 2.0 and 3 IEEE 1394a PC/104+ Module



PCM-3835



Features

- IDE to CompactFlash™ Adaptor
- Three methods of power entry
 1. Standard 4-pin power input
 2. PC/104 connector
 3. 2.5" HDD power input
- Two methods of data input
 1. IDE 40-pin connector
 2. IDE 44-pin connector

Specifications

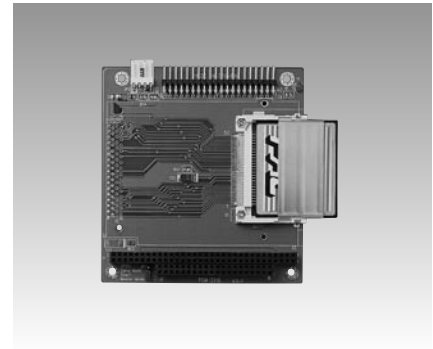
- **Form Factor** Standard 16-bit PC/104 form factor
- **IDE Connector** Two on-board 44-pin 2.0 mm pitch IDE connectors and one 40-pin 2.5 mm pitch IDE connector
- **Operation Voltage** +5 V ±10%
- **Environment** 0 ~ 60° C, operating
- **Power Connector** Standard 4-pin power input

Packing List

- User's manual

Ordering Information

- **PCM-3835-00A1** IDE Flash disk module



PCM-3836

Features

- IDE to CompactFlash™ Adaptor (Type II)
- Three methods of power entry
 1. Standard 4-pin power input
 2. PC/104 connector
 3. 2.5" HDD power input
- Two methods of data input
 1. IDE 40-pin connector

Specifications

- **Form Factor** Standard 16-bit PC/104 form factor
- **IDE Connector** One 40-pin 2.5 mm pitch IDE connector
- **Operation Voltage** +5 V ±10%
- **Environment** 0 ~ 60° C, operating
- **Power Connector** Standard 4-pin power input

Packing List

- User's manual

Ordering Information

- **PCM-3836-0000** IDE Flash disk module (Type II)

1	System on Module Solutions
2	Single Board Computers and Accessories
3	PC/104 Modules
4	Slot CPU Cards and Accessories
5	AIMB/POS Control Boards
6	Internet Security Platforms
7	Embedded Software
8	Appx