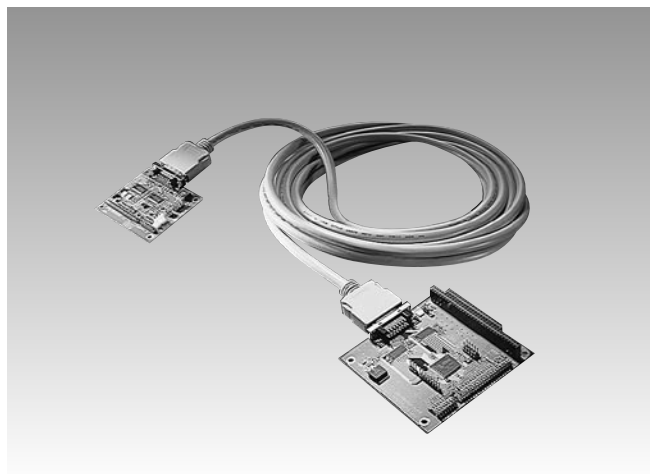


# PCM-3540T/R

## LVDS Receiver & Transmitter Modules



CE FCC

### LVDS Extends Capabilities

Traditional LCD configurations are limited in range from 30 to 50 cm from the signal source. They are also limited in the quality and speed of the transmitted data. By employing LVDS, LCDs can now be placed up to 12 meters away from the computer. Shown below are the various ways the Advantech Embedded SBCs implement LVDS with combinations of on-board and external (add-on) transmitters and receivers. Advantech's transmitter-cable-receiver combinations exceed CE and FCC Class A EMI standards. The Advantech Embedded SBCs support without s 18-bit, 36-bit or 48-bit resolutions up to 1024 x 768 TFT LCDs. This is yet another way Advantech provides flexible solutions that offer implementation options to our customers during their system hardware updates.

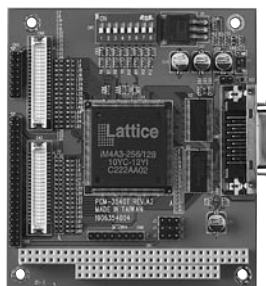
### Specifications

#### PCM-3540T

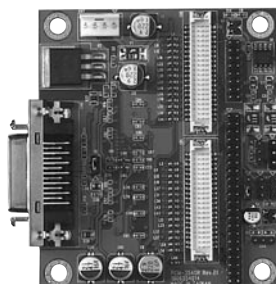
- **Chipset** NS DS POCF363A, DS90C387 or equivalent
- **Input LCD Signal** 5 V, 44-pin + 16-pin @ 36 bit;  
5 V/3.3 V 40-pin + 40-pin @ 48-bit
- **Size/Weight** 96 x 90 mm, 0.056 kg (0.123 lb)
- **Temperature** 0~60° C (32 ~ 140° F), operation

#### PCM-3540R

- **Chipset** NS DS POCF364, DS90C388 or equivalent
- **Input LCD Signal** 3.3 V or 5 V, 44-pin + 16-pin @ 36 bit; 5 V/3.3 V 40-pin + 40-pin @ 48-bit
- **Power Supply** +5 V & 12 V (for back light)
- **Temperature** 0 ~ 60° C (32 ~ 140° F), operation
- **Size/Weight** 72 x 62 mm, 0.029 kg (0.064 lb)



PCM-3540T LVDS Transmitter Module



PCM-3540R LVDS Receiver Module

### Features

#### PCM-3540T

- Standard PC/104 form factor
- Supports 18, 24, 36 or 48-bit resolution up to 1024 x 768 TFT LCD
- Transmission distance 2 m, 3 m, 5 m, 10 m, 12 m

#### PCM-3540R

- LVDS Receiver Module
- Supports 24, 36 or 48-bit resolution up to 1024 X 768 TFT LCD
- On board power supply connector
- Supports 3.3 V/5 V LCD

### Packing List

- Start up manual
- CD-ROM (Manual, Driver, Utility)

### Ordering Information

#### PCM-3540T

- **PCM-3540T-00B1** 36/48-bit LVDS Transmitter Module

#### PCM-3540R

- **PCM-3540R-00B1** 36/48-bit LVDS Receiver Module

### Optional Accessories

- **PCM-10354-1200** 12 m LVDS cable
- **PCM-10354-0203** 2 m LVDS cable (48T to 48R)
- **1700262002** LVDS Cable 26P-48bits/ 26P-36bits 200cm PCM3540
- **1700262003** LVDS Cable 26P-36bits/ 26P-48bits 200cm PCM3540
- **1700262004** LVDS Cable 26P-48bits/ 26P-48bits 200cm PCM3540
- **170026C000** LVDS Cable 26P-48bits/26P-36bits 1200cm PCM3540
- **170026C001** LVDS Cable 26P-36bits/26P-48bits 1200cm PCM3540
- **170026C002** LVDS Cable 26P-48bits/26P-48bits 1200cm PCM3540
- **1700000669** LVDS Cable 26P-48bits/26P-48bits 500cm PCM3540
- **1700000670** LVDS Cable 26P-48bits/26P-48bits 1000cm PCM3540



PCM-10354, LVDS cable