

# HPC-7242

## 2U Rackmount Chassis for ATX Motherboard with 4 Hot-Swap SAS/SATA HDD Trays and RPS

**NEW**



### Features

- Supports ATX motherboard with dual processors
- Four shock-resistant hot-swap disk trays supporting 3.5" or 2.5" SAS/SATA drives for RAID 5/10 application, one slim ODD, and two 2.5" internal drives
- Dual front USB 3.0 ports
- Supports 80plus single or redundant power supply up to 700W
- Front-accessible system fan without opening top cover for easy maintenance
- LED indicators and audible alarm notification for system fault detection
- Built-in Intelligent System Module enabling whole system fan control and remote manageability

**Quiet**

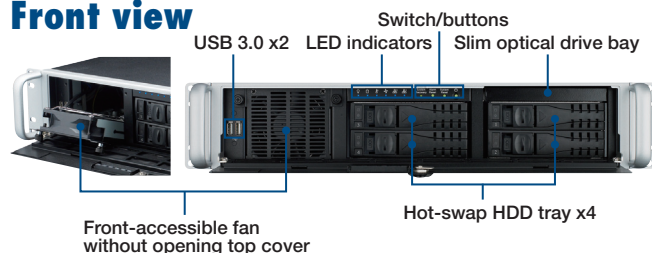
**CE FCC** RoHS COMPLIANT

### Specifications

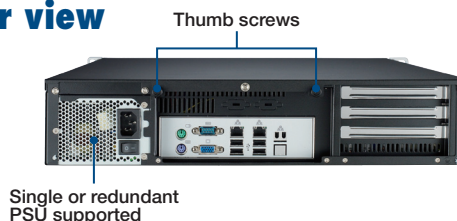
		External	Internal
Drive Bay	Slim Optical Drive	1	-
	2.5"	-	1
	Hot Swap	4 SAS/SATA HDDs	
Cooling	Fan	1 (8 cm/47CFM) + 2 (6 cm/28CFM) for SAS/SATA storage unit	
	Air Filter	Yes	
Front I/O Interface	USB 3.0*	2	
Miscellaneous	LED Indicators	Power, HDD, temperature, fan, LAN1, and LAN2	
	Rear Panel	Two 9-pin D-Sub	
Intelligent System Module Remote Monitoring	CPU/System fan speed, CPU/System temperature, motherboard voltage (Only selected Advantech MBs/CPU cards with SUSIAccess installed can fully enabled these functions, check with Advantech local rep. for detailed information.)		
Environment		Operating	Non-Operating
	Temperature	0 ~ 50° C (32 ~ 122° F)	-40 ~ 70° C (-40 ~ 156° F)
	Humidity	10 ~ 95% @ 40° C, non-condensing	10 ~ 95% @ 60° C, non-condensing
	Vibration (5 ~ 500 Hz)	1 Grms	2 G
	Shock	10 G (with 11 ms duration, half sine wave)	
Physical Characteristics	Dimensions (W x H x D)	482 x 88 x 525 mm (19" x 3.46" x 20.67")	
	Weight	13.7 kg (30.12 lb)	

\* The USB ports do not operate if a main board without on-board USB 3.0 internal box header is installed.

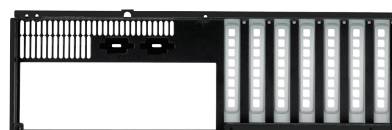
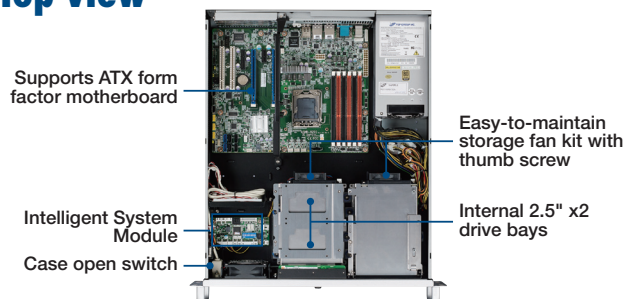
### Front view



### Rear view



### Top view



Rear I/O bracket for low profile add-on cards

\*Note: Motherboard and power supply are not included.

Part Number	Description
HPC-7242MB-00XE	Without PSU, with ATX switch

Part Number	Description
9662132020E	Black mobile HDD tray
1990021407T000	Door filter

Part Number	80 Plus Grade	Wattage	Type	Input
PS8-350FATX-XE	Bronze	350W	Single	AC 100 ~ 240 V (full range)
PS8-500U2-XE	Bronze	500W	Single	AC 100 ~ 240 V (full range)
RPS8-500U2-XE	Bronze	500W	(1+1) Redundant	AC 100 ~ 240 V (full range)
RPS8-700U2-XE	Bronze	700W	(1+1) Redundant	AC 100 ~ 240 V (full range)

Part Number	Description
96CB-SATAPOWER-6P1	SATA power wire 6-pin to big 4-pin (for slim ODD)
1950014302N001	Special bracket for riser card AIMB-RP3P8-12A1E
<b>Rear I/O panel kit for low-profile add-on cards</b>	
1939000361	Screw (should purchase 7 pcs)
1960034816N000	I/O bracket (should purchase 7 pcs)
1960019475T201	Rear panel for low-profile