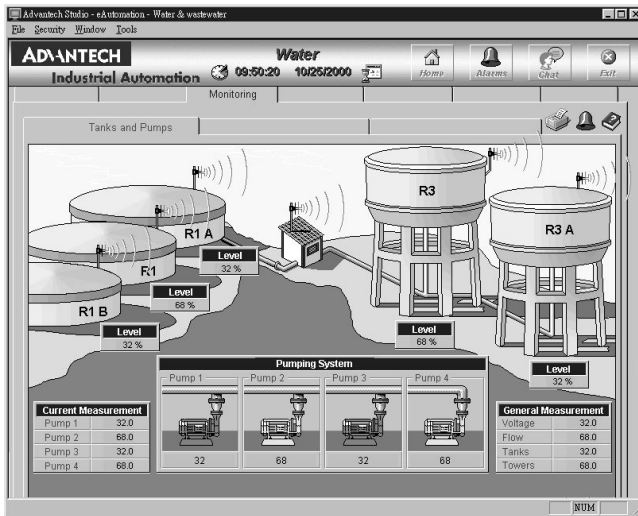


Advantech Studio

Extending Powerful SCADA/HMI to the Web



Features

- Publish real-time dynamic and animated graphic screens, trends, alarms, reports, and recipes to standard browsers
- Import and export recipes, reports and real-time data using the XML format
- Use the same development environment as applications running on Windows NT/2000/XP and CE or on the Web
- Integrates seamlessly with your Windows desktop applications (such as Microsoft Word and Excel)
- View multiple Advantech clients from one Web browser
- Provides extensive development support tools such as message register, error codes, event codes, Database Spy, and Login
- Multi-level security for applications, including use over Intranets and Internet.
- Conforms to industry standards such as Microsoft DNA, OPC, DDE, ODBC, XML, and ActiveX

Introduction

Advantech Studio is a powerful, integrated collection of automation tools that includes all the building blocks required to develop modern Human Machine Interfaces (HMIs), and Supervisory Control and Data Acquisition System (SCADA) applications that run on Windows NT/2000/XP and CE, or in an Internet / Intranet environment. A simple drag and drop, point and click development environment simplifies the most complex behavior of your live processes, but a flexible and easy-to-use scripting language is also available for special requirements. Advantech Studio is currently being used in nearly 2,000 installations worldwide.

Advantech Studio for Windows CE is based on Advantech Studio's full scale supervisory control and monitoring system, and has almost all of the same features, including an object-oriented database, math functions, report generation, archiving, alarms, batch recipes, and interfaces for PLCs, remote I/O and TCP/IP networking. In other words, Advantech Studio for Windows CE is a full-function supervisory control and monitoring system that fits in the palm of your hand or can be embedded in the chipset of a low-cost operator interface. Advantech Studio for Windows® CE is software for complete supervisory control and process monitoring with an operator interface that is available for the Microsoft Windows® CE operating system platform.

Specifications

	Product Series or Part Number	WebLink, WebOIT	AS1500-WS51	AS1500-WR51	AS1500-WD51	AS4000-WS51	AS64K-WS51	AS512K-WS51	AS1500-CD51	AS4000-CD51
Type	Parameter	CE Runtime	Local Interface	Local Interface	Local Interface	Operator Workstation	Control Room	Advanced Server	Local Interface for CE	Operator Workstation for CE
Overview	Web Server	✓	✓	✓	✓	✓	✓	✓	✓	✓
	Development Tool OS	WinNT/2K/XP (P)	WinNT/2K/XP	WinNT/2K/XP	WinNT/2K/XP	WinNT/2K/XP	WinNT/2K/XP	WinNT/2K/XP	WinNT/2K/XP	WinNT/2K/XP
	Runtime OS	WinCE	NT/2K/XP	NT/2K/XP	NT/2K/XP (P)	NT/2K/XP	NT/2K/XP	NT/2K/XP	WinCE (P)	WinCE (P)
	Local Viewer on Runtime	WebOIT only	✓	/RT only	✓	✓	✓	✓	WebOIT only	✓
	Email Support	✓	✓	✓	✓	✓	✓	✓	✓	✓
Modem Dial-up Support	✓	✓	✓	✓	✓	✓	✓	✓	✓	
Database	Application Tags	D	up to 1,500	D	up to 1,500	up to 4,000	up to 64,000	up to 512,000	up to 4000	up to 4000
	Security System	✓	✓	✓	✓	✓	✓	✓	✓	✓
Communication	Drivers	up to 3	up to 3	up to 3	up to 3	up to 5	up to 8	up to 8	up to 3	up to 3
	OPC Client	✓	✓	✓	✓	✓	✓	✓	✓	✓
	OPC Server	✓	✓	✓	✓	✓	✓	✓	✓	✓
	TCP/IP Client	✓	✓	✓	✓	✓	✓	✓	✓	✓
	TCP/IP Server	✓	✓	✓	✓	✓	✓	✓	✓	✓
Legend										
Supported	✓									
D	Determined by development version									
P	Purchased separately									

Ordering Information

- **AS1500-WS51** AStudio Development Kit Professional Edition for Windows XP/2000/NT (Include DEV and RT Edition)
- **AS1500-WR51** AStudio Runtime Edition for Windows XP/2000/NT
- **AS1500-WD51** AStudio Development Kit for Windows XP/2000/NT
- **AS4000-WS51** AStudio Workstation Development Kit for Windows XP/2000/NT
- **AS64K-WS51** AStudio Control Room Development Kit for Windows XP/2000/NT
- **AS512K-WS51** AStudio Advanced Server Development Kit for Windows XP/2000/NT
- **AS1500-CD51** AStudio Development Kit for Windows CE target
- **AS4000-CD51** AStudio Workstation Development Kit for Windows CE target

Development Environment

- Microsoft® Windows® XP, 2000, NT 4.0 service pak 4 and higher
- Min. 256 MB of RAM. (Recommended 512 MB of RAM)
- 100 MB of free hard-disk space for installation
- CD-ROM driver (for installation only)

Runtime Environment

- Windows® CE 4.1 or higher and Internet Explorer for CE
- Min. 32 MB of memory

or

- Microsoft® Windows® 2000, Windows® XP, Windows® NT 4.0 Service Pack 4 and higher, Service Pack 2
- Min. 32 MB of RAM. (Recommended 64 MB of RAM)
- Web Browser that supports ActiveX objects

Hardware Platforms Supported

- **WebOIT-642** 5.7" QVGA STN Web-enabled Operator Interface Terminal
- **WebOIT-1260** 12.1" SVGA TFT PII-grade Web-enabled Operator Interface Terminal
- **WebOIT-1560** 15" XGA TFT P-II grade Web-enabled Operator Interface Terminal
- **WebLink-2050** Pentium-grade Web-enabled Data Connection with Isolated DI/DO
- **WebLink-2053** Pentium-grade Web-enabled Data Connection with Dual LAN
- **WebLink-2059** Pentium-grade Web-enabled Data Connection with PC Card and 4 x RS-232/422/485

Applications

- Remote Utility Management
- Building Automation
- Water and Wastewater Management
- Factory Automation
- Machine Builder

Communication Drivers

Advantech	ADAM-4000, ADAM-5000/485
AEG Schnieder (Modicon Square D Telemecanique)	AEG Compact PLC*, ModCon 984E*, Quantum Family
	ModCon 984E* Ethernet Quantum Ethernet Family
	MODBUS Plus compatible equipment
	Symax
Allen-Bradley	Family PLC2 Family PLC5 Family SLC500 Family 5000
Cutler-Hammer	D50*, D300
GE-Fanuc	Series 90, 90/30 CPU 341*
Mitsubishi	FX-232AW
Omron	C-series Rack PCs Sysmac way Host link units Sysmac C200H*
	E5CK / E5AF
Phoenix	Interbus Compatible
Siemens	S5 (PG port)
	S5/S7 3964R, S7 (MPI)
	Profibus DP Slave Compatible
	Profibus DP Master Compatible
	Profibus FMS Compatible
	S5-945 PG Port
Yokogawa	MXT521
	UT35
	HR2500E
	DA100
	UT37/UT38
	UT750, UP750, UT550, UT520, UP550, UT350, UT320, UM350, UM330, UP350
	YS100
InterBus	-
ModBus Ethernet	-
ModBus	RTU/ASCII
OPC	-

System Requirements



1
IPPC & AWS

2
TPC

3
FPM

4
ATM

5
DA&C

6
cPCI

7
ADAM-3000

8
eConnectivity

9
ICOM

10
Software

11
UNO-2000/3000

12
VBOX

13
ADAM-4000

14
ADAM-5000

15
ADAM-6000

16
ADAM-8000