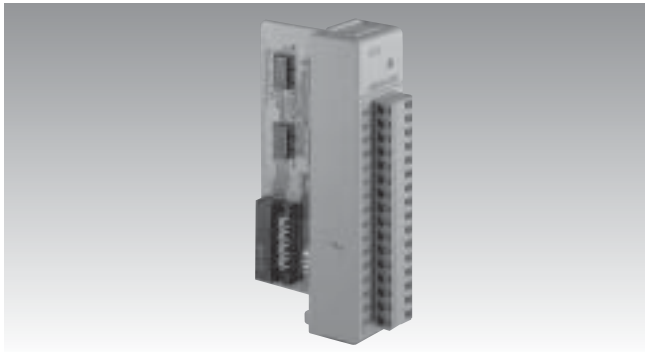


# ADAM-5080

# ADAM-5090

## 4-channel Counter/Frequency Module

## 4-port RS-232 Module



ADAM-5080



### Specifications

#### General

- **Certifications** CE, FM
- **Connectors** 1 x Plug-in screw terminal (# 14~22 AWG)
- **Power Consumption** 1.3 W (typical), 1.5 W (max.)

#### Counter/Frequency

- **Counter Aux. Function** Initial preset, hi-low alarm setting, alarm digital output mapping, overflag
- **Channels** 4
- **Input Frequency** 0.3 ~ 1000 Hz max. (frequency mode)  
5000 Hz max. (counter mode) TTL only
- **Input Level** Isolated or TTL level
- **Isolation Input Level** Logic level 0:  $1 V_{max}$   
Logic level 1: 3.5 ~ 30 V
- **Isolation Voltage**  $1000 V_{RMS}$
- **Max. Count** 4,294,967,285 (32 bits)
- **Minimum Input Current** 2 mA (isolated)
- **Minimum Pulse Width** 500 ms (frequency mode)  
100 ms (counter mode)
- **Modes** Counter (up/down, bi-direction) frequency
- **Programmable Digital Noise Filter** 8 ~ 65000 ms
- **TTL Input Level** Logic level 0: 0 ~ 0.8 V  
Logic level 1: 2.3 ~ 5 V

### Ordering Information

- **ADAM-5080** 4-channel Counter/Frequency Module



ADAM-5090



### Specifications

#### General

- **Certifications** CE
- **Connectors** 4 x RJ-45
- **LED Indicators** TX, RX (each port)
- **Power Consumption** 0.6 W (max.)

#### Communications

- **Data Bits** 5, 6, 7, 8
- **Data Signals** Tx/D, Rx/D, RTS, CTS, DTR, DSR, DCD, RI, GND
- **Parity** none, even, odd
- **Ports** 4
- **Speed** 50 ~ 115.2 kbps
- **Stop Bits** 1, 1.5, 2
- **UARTs** 1 x 16C954 (128-byte FIFO)

**Note:** For ADAM-5510 Series, ADAM-5510KW Series, and ADAM-5511 only

### Ordering Information

- **ADAM-5090** 4-port RS-232 Module

1	Software
2	IPPC
3	TPC
4	FPM
5	ATM & AWS
6	DA&C
7	cPCI
8	ADAM-3000
9	Motion Control
10	ICOM
11	eConnectivity
12	UNO
13	ADAM-4000
14	ADAM-5000
15	ADAM-6000
16	ADAM-8000
17	BAS