

ADAM-5060/5068

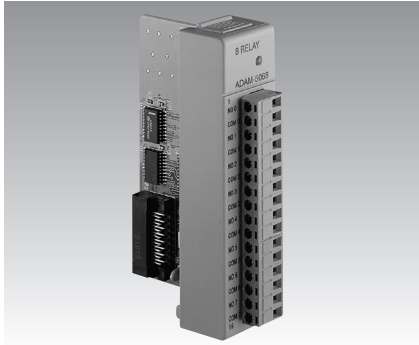
ADAM-5080

ADAM-5090

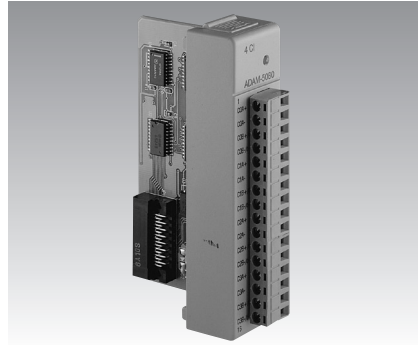
6/8-channel Relay Output Module

4-channel Counter/Frequency Module

4-port RS-232 Module



ADAM-5060/5068



ADAM-5080



ADAM-5090



Specifications

- **Channels** ADAM-5060: 6-channel relay, two from A and four from C
ADAM-5068: 8, from A
- **Contact Rating** ADAM-5060:
AC: 125 V @ 0.6 A; 250 V @ 0.3 A
DC: 30 V @ 2 A; 110 V @ 0.6 A
ADAM-5068:
AC: 120 V @ 0.5 A
DC: 30 V @ 1 A
- **Breakdown Voltage** 500 V_{AC} (50/60 Hz)
- **Relay On Time (typical)** ADAM-5060: 3 msec.
ADAM-5068: 7 msec.
- **Relay Off Time (typical)** ADAM-5060: 1 msec.
ADAM-5068: 3 msec.
- **Total Switching Time** 10 msec.
- **Insulation Resistance** 1000 MΩ minimum at 500 V_{DC}
- **Power Consumption** ADAM-5060: 0.7 W (typical); 1.8 W (max.)
ADAM-5068: 0.25 W (typical); 1.8 W (max.)
- **Certifications** CE
FM (ADAM-5060 only)

Specifications

- **Channels** 4
- **Maximum Count** 4,294,967,285 (32 bit)
- **Input Frequency** 0.3 ~ 1000 Hz max. (frequency mode)
5000 Hz max. (counter mode)
- **Input Level** Isolated or TTL level
- **Minimum Pulse Width** 500m sec. (frequency mode)
100m sec. (counter mode)
- **Minimum Input Current** 2 mA (isolated)
- **Isolation Input Level** Logic level 0: +1 V_{max}
Logic level 1: +3.5 V to 30 V
- **TTL Input Level** Logic level 0: 0 V to 0.8 V
Logic level 1: 2.3 V to 5 V
- **Isolation voltage** 1000 V_{RMS}
- **Mode** Counter (up/down, bi-direction) frequency
- **Counter Aux. Function** Initial preset, hi-low alarm setting, alarm digital output mapping, overflow
- **Programmable Digital Noise Filter** 8 ~ 65000 msec
- **Power Consumption** 1.3 W (typical); 1.5 W (max.)

Specifications

- **Ports** 4 serial ports
- **Data Bits** 5, 6, 7, 8
- **Stop Bits** 1, 1.5, 2
- **Parity** none, even, odd
- **UARTs** 1 x 16C954 (128-byte FIFO)
- **Speed** 50 ~ 115.2 Kbps
- **Data Signals** T x D, R x D, RTS, CTS, DTR, DSR, DCD, RI, GND
- **Connector** RJ-45
- **LED Display** TX, RX
- **Power Consumption** 0.6 W (max.)
- **For ADAM-5510, ADAM-5511 only**

Ordering Information

- **ADAM-5060** 6-channel Relay Output Module - two form A, four form C
- **ADAM-5068** 8-channel Relay Output Module - eight form A

Ordering Information

- **ADAM-5080** 4-channel Counter/Frequency Module

Ordering Information

- **ADAM-5090** 4-port RS-232 Module (only for ADAM-5510/5510M & ADAM-5511)