

# ADAM-5055S

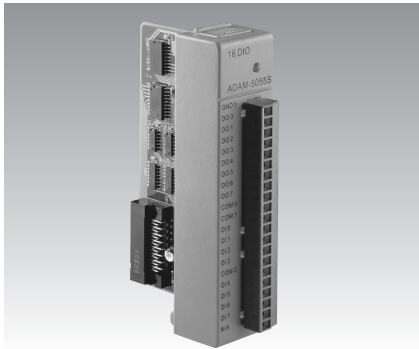
# ADAM-5056/D

# ADAM-5056S/SO

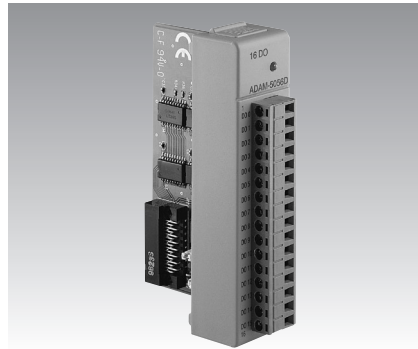
16-channel Isolated Digital I/O w/ LED Module

16-channel Digital Output w/ LED Module

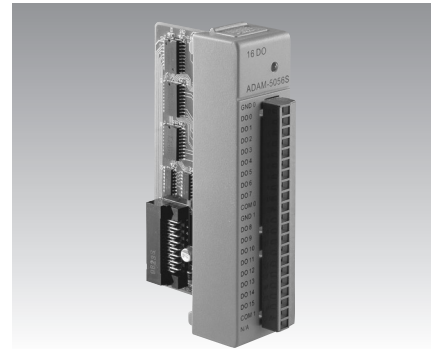
16-channel Isolated Digital I/O w/ LED Module



ADAM-5055S



ADAM-5056/5056D



ADAM-5056S/5056SO



## Specifications

- **Channel** 16
- **I/O Type** 8 DO & 8 DI
- **Digital Output** Open collector to 40 V  
200 mA max. load
- **Digital Input** Dry contact:  
Logic level 0: open  
Logic level 1: close to GND  
Wet contact: Logic level  
0: +3 V max.  
Logic level 1: +10 to 50 V
- **Optical Isolation** 2500 V<sub>DC</sub>
- **Over Voltage Protection** 70 V<sub>DC</sub>
- **Power Consumption** 0.68 W (Typical)
- **LED Indicators** On: Active  
Off: Non-active

## Ordering Information

- **ADAM-5055S** 16-channel Isolated Digital I/O Module w/LED

## Specifications

- **Channels** 16
- **Operating Voltage** 30 V<sub>max</sub>
- **Digital Output** Open collector to 30 V,  
100 mA max. load
- **Power Consumption** ADAM-5056: 0.25 W  
(typical); 0.53 W (max.)  
ADAM-5056D: 0.5 W  
(typical); 0.84 W (max.)
- **Power Dissipation** 450 mΩ for each  
channel
- **LED Indicators: (ADAM-5056D)**  
On: output logic level "1"  
Off: output logic level "0"
- **Output Status Hold Function (ADAM-5056D)**
- **Certifications** CE  
FM (ADAM-5056 only)

## Ordering Information

- **ADAM-5056** 16-channel Digital Output Module
- **ADAM-5056D** 16-channel Digital Output w/LED Module

## Specifications

- **Channel** 16
- **Digital Output** Open collector to 40 V,  
200 mA max. load  
5056S (sink)  
5056SO (source)
- **Optical Isolation** 2500 V<sub>DC</sub>
- **Over Voltage Protection** 70 V<sub>DC</sub>
- **Power Consumption** 0.6 W (typical)
- **LED Indicator** On: active  
Off: non-active
- **Certifications** CE  
FCC (5056SO only)

## Ordering Information

- **ADAM-5056S** 16-channel Isolated Digital Output w/LED Module (Sink)
- **ADAM-5056SO** 16-channel Isolated Digital Output w/LED Module (source)