

# ADAM8221-1BH10

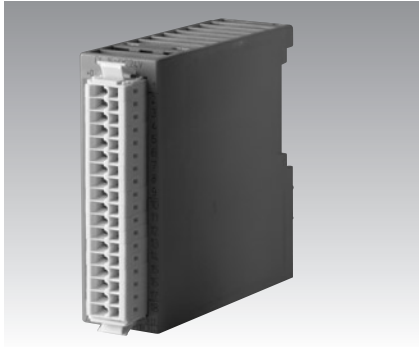
# ADAM8221-1BH20

# ADAM8221-2BL10

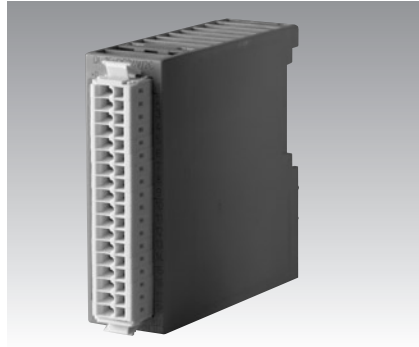
16 DI DC 24 V Module

16 DI DC 24 V, 2 Counter Module

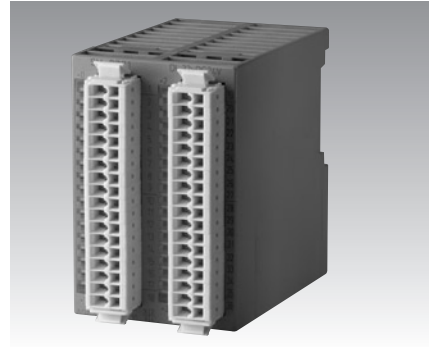
32 DI DC 24 V Module



ADAM8221-1BH10



ADAM8221-1BH20



ADAM8221-2BL10



## Specifications

- **Input Voltage** DC 24 V
- **No. of Channels** 16
- **Optical Isolation** 500 V<sub>DC</sub>
- **Input Data** 2 byte
- **Input Voltage at "1"** DC 15~30 V
- **Input Voltage at "0"** DC 0~5 V
- **Delay Time** 3 ms
- **Supply Voltage Int. Bus** 5 V<sub>DC</sub>
- **Current Consumption Int. Bus** 20 mA

## Ordering Information

- **ADAM8221-1BH10** 16 DI DC 24 V Module

## Specifications

- **Input Voltage** DC 24 V
- **No. of Channels** 14 DI/2 Counter
- **Optical Isolation** 500 V<sub>DC</sub>
- **Input Data** 2 byte/4 byte
- **Input Voltage at "1"** DC 15 ~ 30 V
- **Input Voltage at "0"** DC 0 ~ 5 V
- **Delay Time** 3 ms
- **Supply Voltage Int. Bus** 5 V<sub>DC</sub>
- **Current Consumption Int. Bus** 20 mA

## Ordering Information

- **ADAM8221-1BH20** 16 DI DC 24 V, 2 Counter Module

## Specifications

- **Input Voltage** DC 24 V
- **No. of Channels** 32
- **Optical Isolation** 500 V<sub>DC</sub>
- **Input Data** 4 byte
- **Input Voltage at "1"** DC 15~30 V
- **Input Voltage at "0"** DC 0~5 V
- **Delay Time** 3 ms
- **Supply Voltage Int. Bus** 5 V<sub>DC</sub>
- **Current Consumption Int. Bus** 50 mA

## Ordering Information

- **ADAM8221-2BL10** 32 DI DC 24 V Module