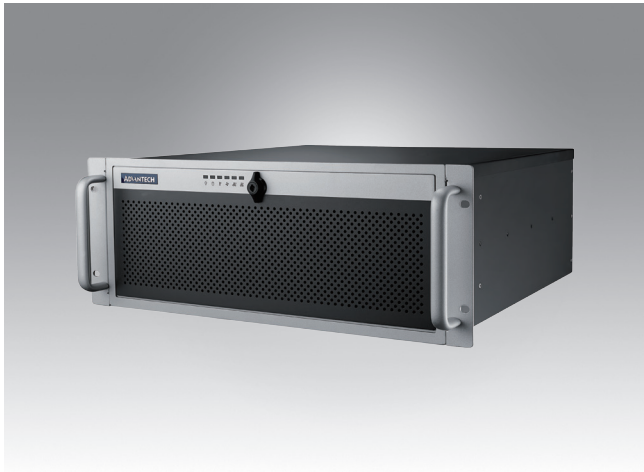


# ACP-4340

## 4U Rackmount Chassis for Full-size SHB/SBC or ATX/MicroATX Motherboard with 4 Hot Swap Drive Trays



### Features

- Supports a PICMG backplane with up to 14 slots or an ATX/Micro-ATX motherboard
- Shock-resistant disk drive bay holds four hot-swap 3.5" and 2.5" SAS/SATA disk trays, one slim optical disk drive, and one 2.5" internal drive
- Dual front USB 3.0 ports
- Front-accessible system fan without opening top cover for easy maintenance
- LED indicators and alarm notification for system fault detection
- Smart fan speed control
- Built-in Intrusion switch function
- Built-in Intelligent System Module enabling whole system fan control and remote manageability

Quiet

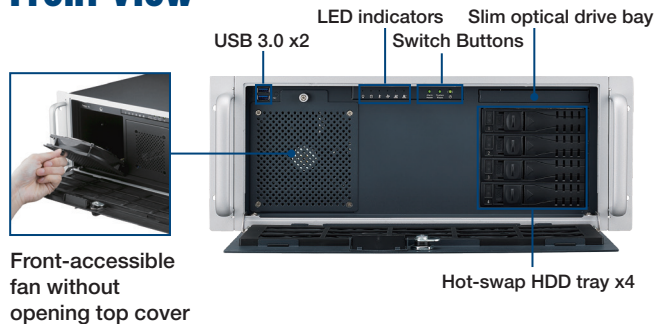
CE FCC

### Specifications

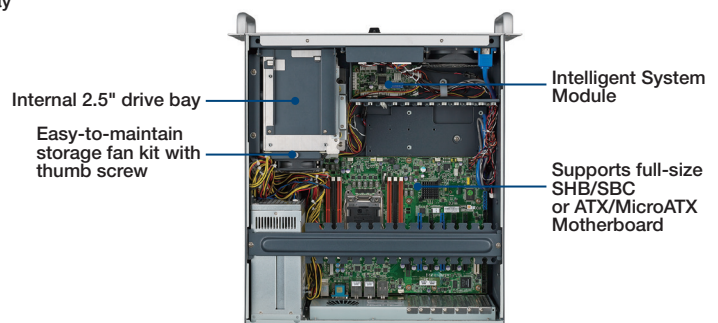
|   |  | External  | Internal                                    |
|---|--|---|---|
| Drive Bay                                   | Slim Optical Drive Bay   | 1   | -   |
|   | 3.5"   | -   | -   |
|   | 2.5"   | -   | 1   |
|   | Hot Swap   | 4 (Compatible with 3.5" or 2.5" devices)  | -   |
| Cooling                                     | Fan  | 1 (12 cm /74 CFM) + 1 (8 cm/56 CFM) for SAS/SATA storage unit   |   |
|   | Air Filter   | Yes   |   |
| Front I/O Interface                         | USB 3.0*   | 2   |   |
| Miscellaneous                               | LED Indicators   | Power, HDD, temperature, fan, LAN1, and LAN2  |   |
|   | Rear Panel   | Backplane version: One 9-pin D-Sub opening<br>Motherboard version: Five 9-pin D-Sub and one 25-pin D-Sub openings |   |
| System Monitoring                           |  | Chassis intrusion switch  |   |
| Intelligent System Module Remote Monitoring | CPU/System fan speed, CPU/system temperature, motherboard voltage<br>(Only selected Advantech MBs/CPU cards with SUSIAccess installed can fully enable these functions, check with Advantech local rep. for detailed information.) |   |   |
| Environment                                 | Temperature  | Operating<br>0 ~ 40 °C (32 ~ 104 °F)  | Non-Operating<br>-40 ~ 70 °C (-40 ~ 156 °F) |
|   | Humidity   | 10 ~ 85% @ 40 °C, non-condensing  |   |
|   | Vibration (5 ~ 500 Hz)   | 1 Grms  | 2 G   |
|   | Shock  | 10 G (with 11 ms duration, half sine wave)  |   |
| Physical Characteristics                    | Dimensions (W x H x D)   | 482 x 177 x 479 mm (19" x 7.0" x 18.8")   |   |
|   | Weight   | 12.5 kg (27.5 lb)   |   |

\* The USB ports do not operate normally if a main board with USB 2.0 internal connector only is installed.

### Front View



### Inside View



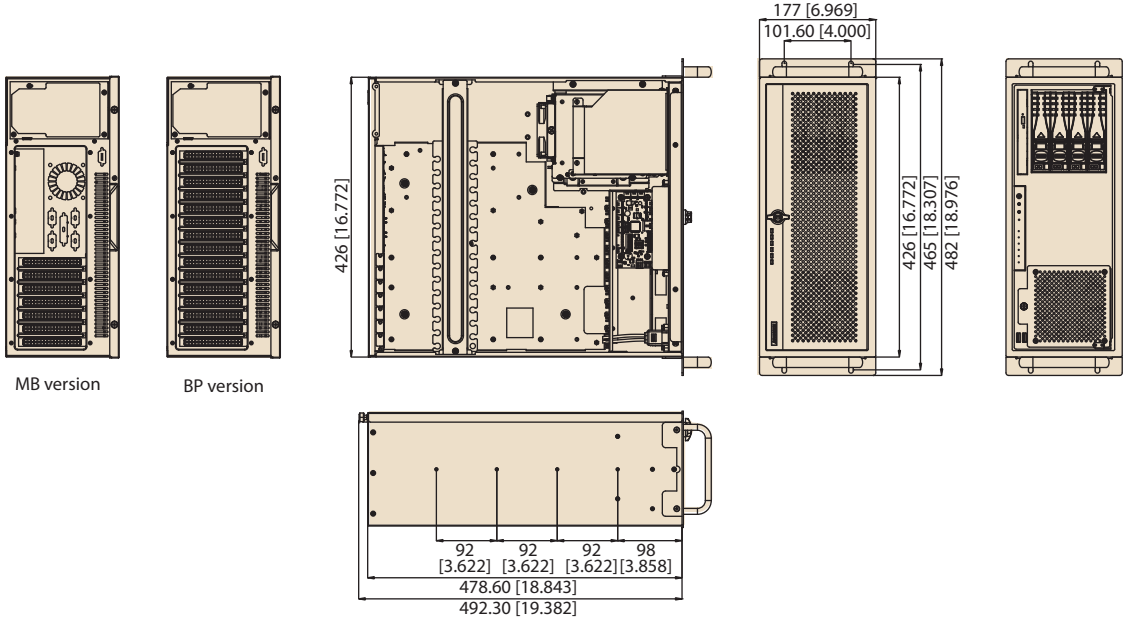
### Rear View



\*Note: Backplane, SBC, motherboard, and power supply are not included.

**Dimensions**

Unit: mm [inch]



**Ordering Information**

| Part Number                 | Power Supply   | Wattage                 | Switch type |
|-----------------------------|----------------|-------------------------|-------------|
| <b>Backplane Version</b>    |                |                         |             |
| ACP-4340BP-40XE             | PS8-400ATX-ZE  | 400W                    | ATX         |
| ACP-4340BP-50ZE             | PS8-500ATX-ZE  | 500W                    | ATX         |
| ACP-4340BP-70ZE             | PS8-700ATX-ZE  | 700W                    | ATX         |
| ACP-4340BP-50RE             | RPS8-500ATX-XE | 500W<br>(1+1 Redundant) | ATX         |
| <b>Mother board Version</b> |                |                         |             |
| ACP-4340MB-40ZE             | PS8-400ATX-ZE  | 400W                    | ATX         |
| ACP-4340MB-50ZE             | PS8-500ATX-ZE  | 500W                    | ATX         |
| ACP-4340MB-70ZE             | PS8-700ATX-ZE  | 700W                    | ATX         |
| ACP-4340MB-50RE             | RPS8-500ATX-XE | 500W<br>(1+1 Redundant) | ATX         |

**Optional Accessories**

| Part Number        | Description                                       |
|--------------------|---|
| 96CB-SATAPOWER-6P2 | SATA power wire 6-pin to big 4-pin (for slim ODD) |
| 98R1434000E        | ACP-4340 fan kit for multi GPU card               |

**Spare Parts**

| Part Number    | Description           |
|----------------|-----------------------|
| 9662132020E    | Black mobile HDD tray |
| 1990021256T000 | Door filter           |